

Linect® –

The Universal Light Connection System for the Lighting Industry



Linect® is a working group within the German electrical and electronic manufacturers' association (ZVEI)



the light connection system

Linect® Universal Light Connection System – Simplifies Lighting Manufacturing Processes

The Linect® connection system reduces the diversity required for readily available plug & play lights.

Benefits:

- Simplifies purchasing and manufacturing processes using fewer components
- Reduces storage costs
- Streamlines supply capabilities

Member companies of the Linect® ZVEI Working Group have developed a standard interface for fast and reliable light connections. The ZVEI association is owner of the utility model and trademark. Manufacturers are companies that have adopted this standard.



For sheet thickness ranging from 0.4 to 1.0 mm

This Is How It Works in Practice – A Single Punch Pattern for All Pole Numbers, 2- to 5-Pole

The punch pattern is designed to provide optimal fitting of both terminal block and connector, regardless of whether or how the lighting metal sheeting is painted. The punching line is streamlined for all manufacturing processes (e.g., laser, water-jet cutting or automated punching systems).

Who benefits from the Linect® Universal Light Connection System?
Of course, your customers!

Benefits for Planners:

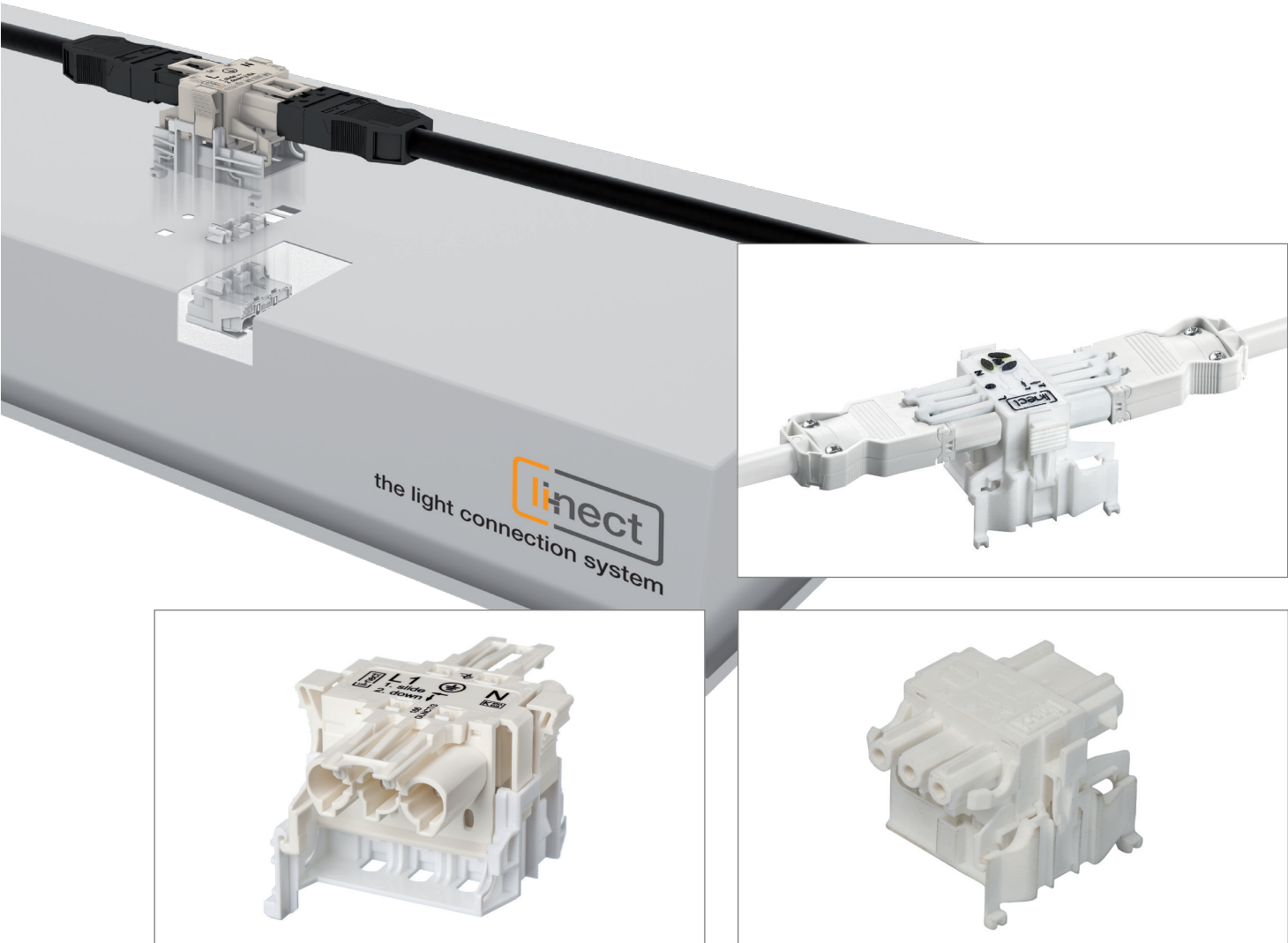
Linect® simplifies planning processes:

- Component compatibility maximizes planning freedom and reliability – from conception to tendering
- Bidding of Linect® lights – regardless of manufacturer
- Separation of installation systems: Standard costs for lights, independent of installation type
- Bidding for the same type of lights can be made for both conventional and pluggable connection systems

Benefits for Installers:

Linect® simplifies on-site installation processes:

- Plug-and-play connections for fast installation
- Specific coding for different functions provides protection against mismating
- The same type of lights is used for different connection types (conventional and pluggable)
- Re-usability of Linect® lights and wiring systems
- Plug-in connector systems can be used, regardless of manufacturer





D120403_07 Linect_Flyer_GB - 04/2012

Linect® – A working group within the German electrical and electronic manufacturers' association (ZVEI)

Fachverband Licht | Lyoner Straße 9 | 60528 Frankfurt am Main | Phone: 069 / 63 02 - 2 93 | E-mail: linect@zvei.org